

0101010101  
01010101010101010101  
0101010101  
0101010101  
01010101010101010101  
0101010101  
0101010101



## ENVIRONMENTAL CONSULTING & SEQRA SERVICES

**CONTACT: Kim Gennaro-Oancea, MS, AICP CEP, Vice President • [kgennaro@pwgrosner.com](mailto:kgennaro@pwgrosner.com)  
630 Johnson Avenue, Suite 7 • Bohemia, NY 11716  
Phone: 631.589.6353 • Fax: 631.589.8705 • [www.pwgrosner.com](http://www.pwgrosner.com)**



# FIRM PROFILE



# PWGC: CLIENT DRIVEN SOLUTIONS

## MEET PWGC

PWGC was founded by Paul Grosser, PhD, PE, PG, a thought leader who recognized the need for a multi-disciplined engineering and environmental consulting firm that offered a diverse range of services to meet market demand regionally and nationally. Based in Bohemia, NY, PWGC has offices in New York City, Syracuse, Saratoga Springs and Connecticut.

PWGC serves the Northeastern United States and has established an industry recognized reputation for innovative problem solving and providing quality services to municipal, educational, private, public and federal clients. We are dedicated to providing quality products and timely services that result in practical solutions for its clients.

PWGC has a multi-disciplined staff of more than 70 professionals. Our strength lies with these licensed professional engineers, geologists and hydrogeologists, LEED accredited professionals and environmental compliance specialists, which gives PWGC a wealth of experience key to helping bring your project from idea to reality.

## CHOOSE PWGC

Whether your objectives are planning, design, redevelopment, remediation or resiliency, PWGC's services are innovative and economical. PWGC is committed to client goals and our dynamic team of professionals provide innovation and flexibility to deliver customized solutions to projects regardless of size, complexity or duration.

## THE PWGC DIFFERENCE

What sets us apart is our customized approach to each project, a dedicated, responsive team, our rapport with regulatory agencies and our exceptional project management. PWGC's assets that translate into additional value for you include the following:

- Strong working relationships with key regulatory sector players
- Specialists in regulatory requirements to facilitate quicker approvals
- Highly responsive to budget & time constraints to get your project on line faster
- Project and quality control monitoring to exceed your project needs
- More than 70 dedicated professionals to provide a wide array of services
- Strong understanding environmental compliance standards

**Make PWGC's quality environmental consulting and engineering solutions work for you.**



## PWGC QUICK FACTS

### Corporate

- Founded & Incorporated: 1990
- SAM/SBA Registered
- Small Business
- DUNS # 798730966
- Federal ID: 11-3612196

### Offices

- Bohemia, NY
- New York, NY
- Saratoga Springs, NY
- Syracuse, NY
- Shelton, CT

### Qualifications

- LICENSES - Engineer, Geologist, LSP, NC, NY, NJ, PA, MD, IN, NH, FL, WA
- LEED-AP
- Envision

### Service Codes

#### NAICS

- 562910 Environmental Remediation
- 541330 Engineering
- 541620 Environmental Consulting
- 562998 Waste Management Services
- 541370 GIS Base Mapping
- 237130 Green Services

#### SIC

- 87489905 Environmental Consulting
- 8711 Engineering Services



# SUMMARY LIST OF SERVICES

## SEQRA Consulting and Planning Services

- Administration of the SEQRA Process
- Type II Opinion Letters
- Coordinated Review
- Environmental Assessment Forms
- Scoping Documents
- Environmental Impact Statements
- Determinations of Significance
- Findings Statements
- Notices and Assistance with Resolutions
- Land Use and Zoning Assessments

## Environmental Services

- Contract Administration
- Petroleum & Chemical Spill Investigation & Remediation
- Remedial Alternative Assessment & Design
- Remedial Construction Management
- Property Transaction Services
  - Due Diligence, RI/FS, PCR
  - Brownfields Redevelopment—Investigation, Remediation, Program Management
  - Phase I, Phase II Environmental Site Assessments
  - NYC E-Designated Sites
  - NYC OER Program Management—Investigations, Remediation, Grant Application
  - Cost Estimating—Property Investigation & Remediation
- Environmental Audits—Assess Environmental Liability
- Environmental Assessment & Contaminant Source Evaluation
- Groundwater Investigation & Remediation
- Aquifer/Pumping Testing
- Risk-Based Approach Solutions
- Site Closure Reports
- UST/AST Management
- Air, Water, Soil & Soil Vapor Sampling/Monitoring Community Air Monitoring
- Environmental & Health Risk Assessment
- Radiological Investigation & Remediation Services
- Hazardous Waste Management
- Soil Management, Certified Clean Fill
- Storm Water Management
- Water Table Evaluation & Flood Mitigation
- Dewatering Design, Permitting & Compliance Sampling

## Environmental Compliance/Management

- Air Quality—Title V Permitting, Air Emission Inventories, Tier II & TRI Reporting
- Articles XI & 12 Hazardous Materials Storage Compliance for Nassau & Suffolk Counties, NY
- Chemical/Petroleum Bulk Storage Tanks—Permitting, Audits, Regulatory/Environmental Compliance Management
- Facilities Contingency Plan Development/Management, including SPCC, SWPPP, FRP
- Compliance Review
- Regulatory Compliance Reporting
- FAR 139.321 Fire Safety Inspections
- Fuel Storage Facilities & Mobile Fuel Equipment

## Industrial Hygiene

- Asbestos Inspections and Testing
- Indoor Air Quality

- Legionnaire Insoections
- Lead/Mold Testing and Remedial Plans
- Noise Surveys

## Expert Counseling/Client Representation

- Expert Testimony, Support & Counsel

## Wastewater/Water Supply

- Water Supply/Wastewater—Systems, Planning, Design
- Groundwater Modeling
- Site/System/Feasibility Evaluation, Planning & Technical Assistance
- Water Conservation Plan Development

## Natural Resource Studies

- Wetlands Delineation, Permitting & Mitigation Design
- Threatened & Endangered Species Surveys
- Migratory Studies
- Ecological Studies
- Ecological Risk Assessments
- National Environmental Policy Act (NEPA) Studies
- Planning
- Watershed Analysis

## Energy/Sustainability Solutions

- Geothermal System Feasibility Analysis, Design, Permitting & Construction Management
- Renewable Energy Design for Solar & Wind
- Carbon Footprint Analysis, Profile & Management
- Alternative Fueling Station Planning & Design, Equipment Specification, Construction Observation, Permitting, Compliance & Facility Commissioning for Compressed Natural Gas, Hydrogen, Biodiesel & Ethanol-85
- Building Due Diligence & Energy Studies
- LEED Administration & Sustainable Design Practices
- High Performance Sustainable Buildings
- Energy Conservation & Energy Recovery Alternatives
- MEP/High Efficiency Equipment Solutions
- Power Generation, Cogeneration & Fuel Cells
- Energy Modeling, Utility Rebate Programs & Tax Incentives
- Green Legislation & ARRA Stimulus Grants
- GIS Based Modeling for Wind, Solar & Carbon Footprint Analysis

## Civil/General Engineering

- “Best Economic Alternatives” Evaluation
- Comprehensive Feasibility Studies
- Conservation Plan Development
- Construction Planning, Management, QA/QC
- Drainage Planning, Grading & Design
- Evaluation, Planning & Technical Assistance
- Facility Design & Condition Assessment
- Planning & Design
- Property Condition Report

## Geographical Information Systems/Global Position Systems

- Data Collection & Conversion
- Infrastructure & Asset Management
- Wetlands & Endangered Species Delineation
- Digital Elevation Model Analysis
- Customized GIS Applications, GIS/CAD Integration
- Database Development, Conversions, Manual Digitizing
- Website Development
- GPS Field Data Collection & Post-Processing
- Remote Sensing & Image Processing



An aerial photograph of a large-scale construction project. The site is filled with concrete foundations, rebar structures, and several tall yellow tower cranes. The ground is a mix of dirt, sand, and construction materials. In the background, there are some residential buildings and green spaces, suggesting an urban or suburban setting. The overall scene is one of active development and infrastructure work.

# SEQRA SERVICES

## INTRODUCTION TO SEQRA

PWGC has extensive experience with the process and requirements of the New York State Environmental Quality Review Act (SEQRA), as well as related local, state and federal permitting.

PWGC provides environmental and land use consulting services for projects subject to local, state and/or federal environmental and land use regulations. PWGC can assist clients in the early stages of project planning by identifying potential environmental and land use constraints or sensitivities. All of PWGC's SEQRA work is led by Vice President Kim Gennaro-Oancea, MS, AICP CEP who has decades of experience providing these services.

PWGC works with technical specialists to create plans that comply with the environmental and land use regulations, and are consistent with community goals.

### PWGC SERVICES

- Preparation of environmental assessments, environmental impact statements, determinations of significance, and related documents/analyses.
- Permitting and compliance services – federal- and state-regulated wetlands and adjacent areas, floodplain development, coastal management zones, other designated critical environmental areas, and historic resources/Section 14.09 compliance
- Land use and zoning assessments.
- Expert testimony and public presentations.



### MARKETS SERVED

#### Public School Districts and Libraries

PWGC assists Boards with the administration and management of the SEQRA process, prepares the requisite environmental analyses and environmental permit applications for construction and alteration projects, coordinates with interested and involved agencies, and participates in public meetings.

#### Municipalities and Special Districts

As the environmental and planning consultant, PWGC reviews and prepares environmental and planning-related documents, determinations and notices. PWGC also assists with the administration of the SEQRA process for the lead and involved agencies, and participates at public meetings or hearings.

#### Retail, Commercial, Educational and Residential Applications

PWGC assists in the preliminary planning phase of all projects, prepares environmental assessments, environmental impact statements and related documents, as well as assists with obtaining required permits.





# RESUMES

# Kim Gennaro-Oancea, MS, AICP CEP

## VICE PRESIDENT

### PROFESSIONAL EXPERIENCE

PWGC: 3 years  
Prior: 23 years

### AREAS OF EXPERTISE

Environmental Planning and Design  
SEQRA Compliance and Permitting  
Land Use and Zoning Assessments

### EDUCATION & TRAINING/CERTIFICATION

MS, Environmental Science and Management, Long Island University  
BS, Environmental Planning and Design, Rutgers University  
Certified Environmental Planner (CEP) - American Institute of Certified Planners (AICP)

### PROFILE

Ms. Gennaro-Oancea is a Vice President at PWGC and has over 25 years of experience as an environmental and land use consultant. Ms. Gennaro specializes in State Environmental Quality Review Act (SEQRA) compliance. She assists clients in the early stages of project planning by identifying potential environmental and land use constraints or sensitivities. Ms. Gennaro-Oancea has been the principal preparer of EAFs and Supplemental Analyses, DEISs, FEISs, GEISs, Determinations, Notices, and Findings Statements for various types of clients, and has also reviewed SEQRA documentation for municipal clients.

### NOTABLE PROJECTS

#### K-12 Public Schools and Libraries, Counties of Suffolk, Nassau, Westchester, Putnam, Ulster and Dutchess, NY

Ms. Gennaro-Oancea has served as an environmental and SEQRA-consultant to nearly 200 public school districts and libraries throughout New York State and has worked on hundreds of projects. Work has ranged from annual capital construction projects, solar/energy performance upgrades, to major construction initiatives in excess of \$250 million.

#### Environmental/SEQRA and Planning Services, Various Town and Village Board, Counties of Nassau and Suffolk, NY

Ms. Gennaro-Oancea provides SEQRA-consulting services, including the review and preparation of all environmental and planning-related documents, for various boards across Long Island. She has assisted the following municipal jurisdictions as environmental consultant for various applications in the Town of Shelter Island, Town of Brookhaven, Town of Oyster Bay, and the Incorporated Villages of Lake Success, Great Neck Estates, Sands Point and Old Brookville, NY. Services include the review and preparation of environmental and planning-related documents, including DEISs, FEISs, Determinations (Negative and Positive Declarations), Notices, and Findings Statements.

#### Environmental/SEQRA and Planning Services, Healthcare Facilities, Counties of Nassau and Suffolk, NY

Ms. Gennaro-Oancea has provided environmental, planning and SEQRA-consulting services to healthcare institutions across Long Island, including Stony Brook University Medical Center, Good Samaritan Hospital Medical Center, South Nassau Communities Hospital, Northwell Health (Former North Shore Long Island Jewish Health Care System [NSLIJS]), and Winthrop Hospital. Ms. Gennaro-Oancea also served as Village Planning Consultant to various boards in the Inc. Village of Lake Success for major healthcare projects.

#### Environmental/SEQRA/NEPA and Planning Services, Aviation/Airports, Counties of Suffolk and Orange, NY

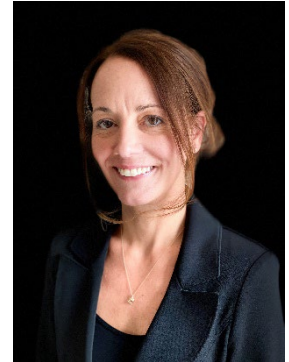
Ms. Gennaro-Oancea has provided environmental, planning, NEPA and SEQRA-consulting services to various airports and tenants, including Randall Airport, SheltAir Aviation/Republic Airport, SheltAir Aviation/Gabreski Airport, East Hampton Airport, Northeastern Aviation/Gabreski Airport, and Spadaro Airport.

#### Carriage Hill Developers, Proposed Multifamily Development, Incorporated Village of Westhampton Beach, NY

Ms. Gennaro-Oancea served as Project Manager and principal preparer of SEQRA documents for a 52-unit multifamily development. The project was subject to a DEIS, FEIS, DSEIS, and FSEIS. The project received positive Findings in 2021.

#### The Enclaves Hotel and Restaurant, Town of Southold, NY

Ms. Gennaro-Oancea served as Project Manager and principal preparer of SEQRA documents for a 44-unit hotel and sit-down restaurant on a 6.75±-acre parcel. The project was subject to a DEIS and FEIS. The project received positive Findings in 2022.







#### HK Ventures, Proposed Calverton Industrial Park, Calverton, Town of Riverhead, NY

Ms. Gennaro-Oancea serves as Project Manager and principal preparer of SEQRA documents for a 413,000± square-foot industrial development on a 30.25±-acre parcel. The project was subject to a DEIS, FEIS, DSEIS, FSEIS, and a Findings Statement is pending.

#### NorthPoint Development, Proposed Riverhead Logistics Center, Calverton, Town of Riverhead, NY

Ms. Gennaro-Oancea serves as Project Manager and principal preparer of SEQRA documents for a 641,000± square-foot industrial warehouse/logistics center on a 39.7±-acre parcel.

#### Strong's Yacht Center, Proposed Construction of Boat Storage Buildings, Mattituck, Town of Southold, NY

Ms. Gennaro-Oancea serves as Project Manager and principal preparer of SEQRA documents for two yacht storage buildings with a total GFA of 105,000± square feet at the existing Strong's Yacht Center. The project was subject to a DEIS and is ongoing.

#### Dune Road Holding Corp, Proposed Multifamily Development, Town of Southampton, NY

Ms. Gennaro-Oancea serves as Project Manager and principal preparer of SEQRA documents for a 25-unit multifamily development on Dune Road. The project is subject to a DEIS and is ongoing.

#### Ronkonkoma Hub Transit-Oriented Development, Town of Brookhaven, NY

Ms. Gennaro-Oancea served as Project Manager and principal preparer of SEQRA documents, a Land Use Implementation Plan, and Form-Based Code for this proposed 54-acre Transit-Oriented Development around the LIRR Ronkonkoma Station. .

#### Tritec - Mixed-Use Development as part of Downtown Revitalization Plan, Incorporated Village of Patchogue, NY

Ms. Gennaro-Oancea served as Project Manager for this change of zone and mixed-use redevelopment of downtown properties for 250,000 sf of residential use, 30,000 sf of retail space, an 85,000 sf hotel, recreational amenities and open space. Services included the preparation of an environmental impact statement and attendance at public meetings and hearings. The project has been recognized throughout New York State as an example of successful downtown revitalization with public-private partnerships.

#### Redevelopment of the former Bulova Watchcase Factory, Village of Sag Harbor, NY

Ms. Gennaro-Oancea served as Project Manager, prepared extensive environmental analysis and SEQRA documentation for historic revitalization, redevelopment and remediation of Bulova Watchcase Factory, a New York inactive hazardous waste site. Services also included testimony to the Inc. Village of Sag Harbor (various boards). This multi-year effort was due to property history and condition and the construction-related impacts of site development as well as re-use for residential purpose. Other issues included the impacts to an historic property, traffic, soils and groundwater.

#### Redevelopment of Avis Headquarters, Town of Hempstead, NY

Environmental and planning services, including the preparation of an environmental impact statement and other SEQRA-related documentation for a 400,000-square-foot, mixed-use center consisting of office, retail, restaurant and hotel uses within a 22±-acre property. Extensive coordination was required with various consultants, and relevant municipal and community service entities.

## PREVIOUS EXPERIENCE

### KGO CONSULTING, INC., ENVIRONMENTAL AND LAND USE PLANNING FIRM

Owner/Founder - 09/2014-01/2020

### VHB ENGINEERING, PLANNING AND LANDSCAPE ARCHITECTURE, PC (HAUPPAUGE, NY)

Director of Environmental Services - 01/2009-05/2014

### FREUDENTHAL & ELKOWITZ CONSULTING GROUP, INC. (ISLANDIA, NY)

Director of Planning - 10/1999-12/2008

### GALLI ENGINEERING, PC (MELVILLE, NY)

Environmental Planner - 01/1997-09/1999



# Katelyn Kaim, AICP Candidate

## SR. ENVIRONMENTAL PLANNER AND PROJECT MANAGER



### PROFESSIONAL EXPERIENCE

PWGC: 2.5 years  
Prior: 2 years

### AREAS OF EXPERTISE

Environmental Planning and Design  
Permitting and SEQRA Compliance  
Land Use and Zoning Assessments  
FAA Obstruction Analysis

### EDUCATION & TRAINING/CERTIFICATION

BS, Environmental Studies (Concentration: Planning, Policy, and Law), SUNY Environmental Science and Forestry

### PROFILE

Ms. Kaim is a Senior Environmental Planner and Project Manager in PWGC's New York State Environmental Quality Review Act (SEQRA) Division. Ms. Kaim provides environmental and land use consulting services for projects subject to local, state and/or federal environmental and land use regulations. Ms. Kaim provides environmental consulting services across major market sectors including, but not limited to, real estate, healthcare, institutional, energy, and transportation. Ms. Kaim's experience has allowed her to establish an excellent record in timely completion and maintenance of project coordination, monitoring, and document preparation, while successfully maintaining communication between clients, government agencies, and relevant entities. Ms. Kaim has been an assistant preparer of EAFs and Supplemental Analyses, DEISs, FEISs, Determinations, Notices, and Findings Statements.

---

### NOTABLE PROJECTS

#### K-12 Public Schools and Libraries, Counties of Suffolk and Nassau, NY

Ms. Kaim has served as an environmental and SEQRA-consultant to multiple public school districts and libraries across Long Island. Work has ranged from annual capital construction projects to major construction initiatives in excess of \$40 million.

#### Environmental/SEQRA and Planning Services, Various Boards, Counties of Nassau and Suffolk, NY

Ms. Kaim serves as an assistant environmental and SEQRA-consultant, for various boards across Long Island. She has assisted the following municipal jurisdictions as environmental consultant for various applications in the Town of Shelter Island and the City of Glen Cove. Services include the review and preparation of environmental and planning-related documents, including EAFs, DEISs, FEISs, Determinations (Negative and Positive Declarations), Notices, and Findings Statements.

#### Proposed Solar Developments, Counties of Orange, Ulster, and Cayuga NY

Ms. Kaim serves as Senior Environmental Planner for various ongoing solar development facilities across New York State. Services include the preparation of environmental and planning-related documents, including Desktop Site Assessments, EAFs, and Visual Impact Assessments.

#### HK Ventures, Proposed Industrial Park Development in the hamlet of Calverton, Town of Riverhead, NY

Ms. Kaim served as Environmental Planner and assistant preparer of a DEIS, DSEIS (and subsequent FEIS and FSEIS) and coordination of supporting environmental documentation and studies. The project included the development of a vacant property (formerly used for agricultural purposes) with a 413,000 square-foot industrial development on a 30.25-acre parcel.

#### Carriage Hill Developers, Proposed Multifamily Development, Incorporated Village of Westhampton Beach, NY

Ms. Kaim served as Environmental Planner and assistant preparer of a DEIS, DSEIS (and subsequent FEIS) for a 52 unit multi-family residential development with associated residential amenities in Westhampton Beach. Coordination was required with the municipality and community service providers.

#### Suffolk Regional Off-Track Betting Corporation, Jake's 58 Expansion and Alterations, Village of Islandia, NY

Ms. Kaim served as Senior Environmental Planner and assistant preparer of SEQRA documents for a 110,500 square-foot casino addition and 17,500 square-foot casino support addition. Services included the preparation of an EAF, Determination of Significance, DEIS, FEIS, Notices, and Findings Statement.



#### Proposed Industrial Warehouse Distribution Facility in the hamlet of Calverton, Town of Riverhead, NY

Ms. Kaim serves as Senior Environmental Planner and principal preparer of SEQRA documents for a 641,000 square-foot industrial development on a 39.70-acre parcel. The project is subject to a DEIS and is ongoing.

#### Proposed Alzheimer's Foundation of America Development, Town of Babylon, NY

Ms. Kaim served as Senior Environmental Planner and preparer of an EAF for a change of zone application for the conversion of an existing building into offices and day program space for the Alzheimer's Foundation of America.

#### Good Samaritan Hospital Medical Center, Town of Islip, NY

Ms. Kaim has provided environmental consulting services for the construction of a new Patient Care Pavilion in West Islip including assistance with the preparation of environmental review documentation for the proposed hospital expansion which included an EAF and Expanded Environmental Assessment.

#### Redevelopment of the Former New York Institute of Technology Campus, Town of Islip, NY

Ms. Kaim has assisted in the preparation of an EAF and Expanded Environmental Assessment for the rehabilitation and renovation of the existing campus buildings (originally built in connection with the Central Islip Psychiatric Center) for a multi-family residential use and construction of additional residential amenities.

#### Tritec – Transit-Oriented Development at Touro College, Town of Islip, NY

Ms. Kaim has provided environmental and planning services, including the preparation of an EAF, Expanded Environmental Assessment and other SEQRA-related documentation. The proposal included a change of zone to the Town's Downtown Development District with a mixed-use, transit-oriented development consisting of residential, commercial and retail uses on a 10-acre property in Bay Shore, NY.

#### Redevelopment of the Woodmere Golf and Country Club, Town of Hempstead, Village of Woodsburgh and Village of Lawrence, NY

Ms. Kaim has assisted with the preparation of a DEIS for the redevelopment of the Woodmere Golf and Country Club with single-family residences spanning three different municipalities. The project was a waterfront development and located within a flood zone. Extensive coordination was required with the various municipalities and community service providers.

## PREVIOUS EXPERIENCE

### VHB – LONG ISLAND OFFICE

VHB Engineering, Surveying, Landscape Architecture and Geology, PC, Hauppauge, NY

#### Environmental Planner

- Provided environmental services for a wide range of projects across major market sectors (i.e., real estate, healthcare, institutional, energy, transportation and wireless communication facilities).
- Conducted research, performed site inspections and assisted with the preparation of environmental documents pursuant to SEQRA, and related planning and zoning studies.
- Prepared supporting figures and mapping for properties throughout Nassau and Suffolk Counties using ArcGIS.
- Assisted with public meetings and hearings as part of the environmental review process.

### NYC Parks and Recreation Department, Queens, NY

#### Northeast Queens Park Trail Maintenance Coordinator

- Assessed current trail conditions and developed work plans to correct any deficiencies or make upgrades.
- Collaborated with citywide trails coordinator to review and implement work plans, upgraded internal trail condition maps via ArcGIS to reflect new deficiencies or corrected conditions and evaluated projects.
- Recruited volunteers from the local community to participate in projects to fulfill work plan objectives.



# Sarah Loprieno

## ENVIRONMENTAL PLANNER

### PROFESSIONAL EXPERIENCE

PWGC: 1 year

### AREAS OF EXPERTISE

Environmental Planning and Design  
Permitting and SEQR Compliance  
Land Use and Zoning Assessment  
Task Management  
ArcGIS

### EDUCATION & TRAINING/CERTIFICATION

MPS, Environmental Studies, SUNY Environmental Science and Forestry  
BS, Applied Mathematics (Minor: Physics), SUNY Geneseo

### PROFILE

Ms. Loprieno is an Environmental Planner in PWGC's New York State Environmental Quality Review Act (SEQRA) Division. Ms. Loprieno assists on projects across major market sectors including, but not limited to the following: real estate, healthcare, institutional, and transportation industries.

### NOTABLE PROJECTS

#### K-12 Public Schools, Counties of Suffolk and Nassau, NY

Ms. Loprieno serves as an assistant environmental- and SEQRA-consultant to multiple public school districts across Long Island. Work has ranged from annual capital construction projects to major construction initiatives in excess of \$40 million.

#### HK Ventures, Proposed Calverton Industrial Park, Town of Riverhead, NY

Ms. Loprieno has served as an assistant preparer of a DSEIS and in coordination of supporting environmental documentation and studies. The project included the development of a vacant property (formerly used for agricultural purposes) with a 413,000 square-foot industrial development on a 30.25-acre parcel.

#### Strong's Marine, Proposed Construction of Boat Storage Buildings, Town of Southold, NY

Ms. Loprieno serves as an assistant preparer of SEQRA documents and in coordination of supporting environmental documentation and studies. The project includes two yacht storage buildings with a total GFA of 105,000 square feet at the existing Strong's Yacht Center.

#### Proposed Solar Developments, Counties of Orange, Ulster, and Cayuga NY

Ms. Loprieno serves as Environmental Planner for various ongoing solar development facilities across New York State. Services include the preparation of environmental and planning-related documents, including Desktop Site Assessments, EAFs, and Visual Impact Assessments.

#### Proposed Industrial Warehouse Distribution Facility in the hamlet of Calverton, Town of Riverhead, NY

Ms. Loprieno serves as Environmental Planner and assistant preparer of SEQRA documents for a 641,000 square-foot industrial development on a 39.70-acre parcel. The project is subject to a DEIS and is ongoing.

### PREVIOUS EXPERIENCE

#### State University of New York College of Environmental Science and Forestry Syracuse, NY

##### Intern

- Working on water quality green infrastructure projects that relate to climate change, carbon sequestration, and renewable energy in central New York. Hybrid of remote and in-person at the Center of Excellence in Syracuse, NY.

#### State University of New York at Geneseo

##### Math Tutor

- Tutored fellow college students in Linear Algebra, Proofs, Calculus, Calculus 2, and Calculus 3.

#### State University of New York at Geneseo

##### Biology Lab Assistant

- Worked as an assistant to a biology professor at SUNY Geneseo. Duties included cataloging animals and organizing labs.

